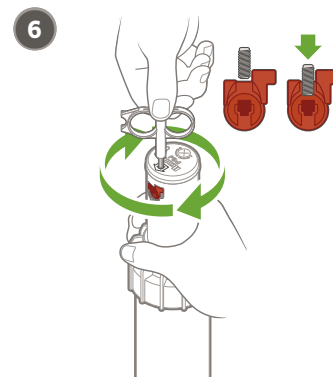
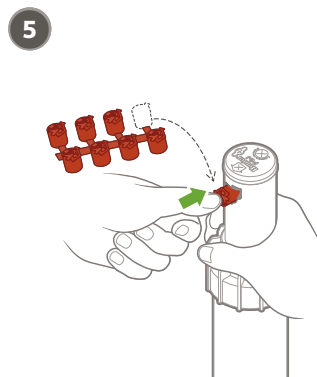
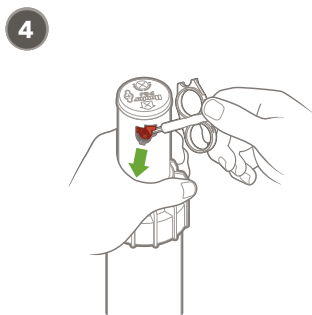
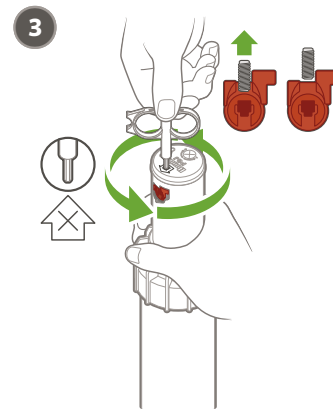
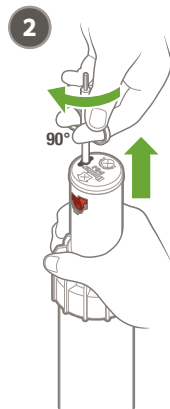
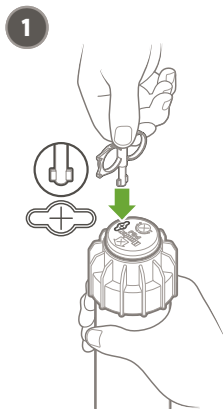
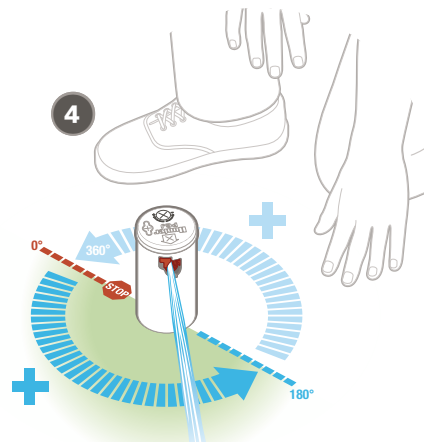
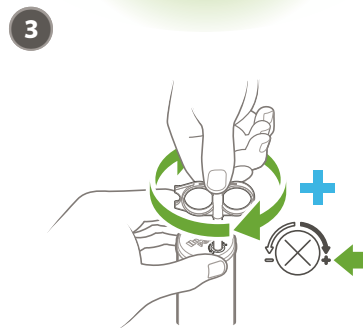
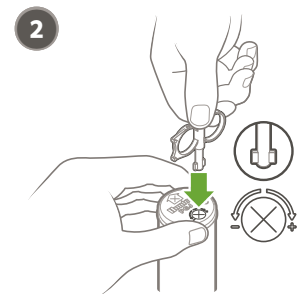
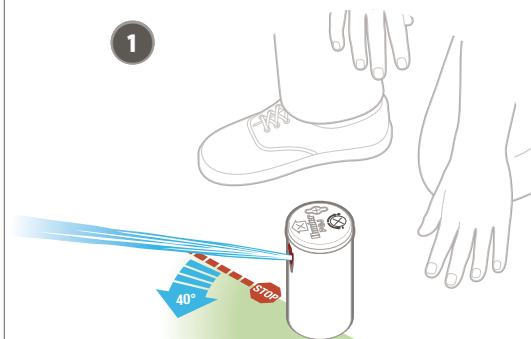
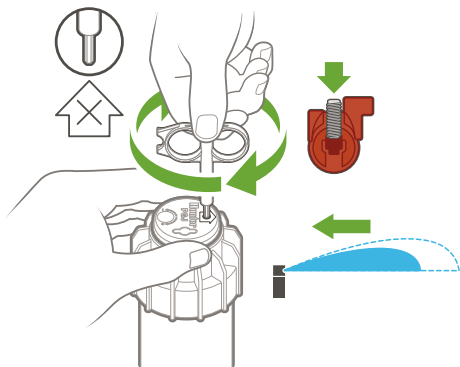
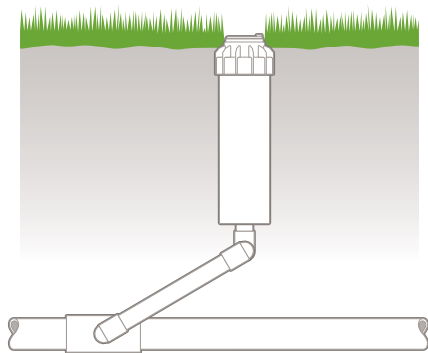


PGJ







1.7-3.8 Bar  
170-380 kPa  
30-50 PSI



2.2-3.4 l/m  
0.6-0.9 GPM



1.7-3.8 Bar  
170-380 kPa  
30-50 PSI



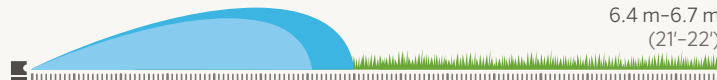
3.0-4.2 l/m  
0.9-1.1 GPM



1.7-3.8 Bar  
170-380 kPa  
30-50 PSI



4.5-6.7 l/m  
1.3-1.7 GPM



1.7-3.8 Bar  
170-380 kPa  
30-50 PSI



5.6-9.3 l/m  
1.7-2.3 GPM





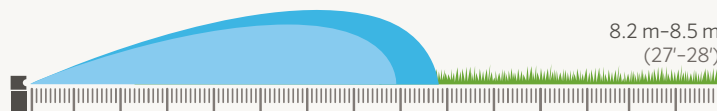
**2.5**



1.7-3.8 Bar  
170-380 kPa  
30-50 PSI



7.6-10.9 l/m  
2.2-2.8 GPM



8.2 m-8.5 m  
(27'-28')



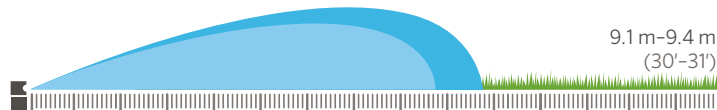
**3.0**



1.7-3.8 Bar  
170-380 kPa  
30-50 PSI



8.5-13.7 l/m  
2.5-3.4 GPM



9.1 m-9.4 m  
(30'-31')



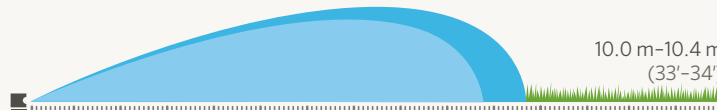
**4.0**



1.7-3.8 Bar  
170-380 kPa  
30-50 PSI



13.3-16.7 l/m  
3.7-4.3 GPM



10.0 m-10.4 m  
(33'-34')



**5.0**



1.7-3.8 Bar  
170-380 kPa  
30-50 PSI



17.0-20.5 l/m  
4.7-5.3 GPM



11.0 m-11.3 m  
(36'-37')